

GOALKEEPERS



SET BALI



MUNDIAL 100% POLYESTER - 145 g/mq

ADULT S/M/L/XL/XXL/3XL JUNIOR YXS/XXS/XS

LIMITED EDITION

FSOBOL

ADULT

FSOB1L

JUNIOR



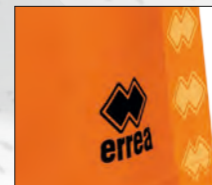
33690
apricot



45380
pistache



OEKO-TEX®
CONFIDENCE IN TEXTILES
STANDARD 100
074744.0 CENTROCOT
Tested for harmful substances.
www.oeko-tex.com/standard100



Set in transfer senza imbottitura. Maglia manica raglan con polsino smacchinato. Collo a giro con parasudore interno elastico. Pantaloni corti in transfer con elastico in vita e laccioli regolabili.

Sublimated set without padding. Shirt with raglan sleeve with knitted cuff. Crew neck with internal elastic neck-tape. Sublimated shorts with elastic waistband and adjustable drawstring.

Ensemble sublimé sans rembourrage. Maillot à manches raglan avec bord en tricot plat. Col rond avec bande de propriété interne. Short sublimé avec élastique à la taille et lacets réglables.

SET ELAR



MUNDIAL 100% POLYESTER - 145 g/mq

ADULT S/M/L/XL/XXL/3XL JUNIOR YXS/XXS/XS

LIMITED EDITION

FSOCOL

ADULT

FSOC1L

JUNIOR



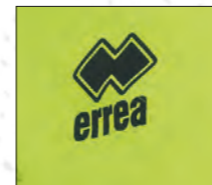
45390
lemon



45360
papaya



OEKO-TEX®
CONFIDENCE IN TEXTILES
STANDARD 100
074744.0 CENTROCOT
Tested for harmful substances.
www.oeko-tex.com/standard100



Set in transfer senza imbottitura. Maglia manica raglan con polsino smacchinato. Collo a giro con parasudore interno elastico. Pantaloni corti in transfer con elastico in vita e laccioli regolabili.

Sublimated set without padding. Shirt with raglan sleeve with knitted cuff. Crew neck with internal elastic neck-tape. Sublimated shorts with elastic waistband and adjustable drawstring.

Ensemble sublimé sans rembourrage. Maillot à manches raglan avec bord en tricot plat. Col rond avec bande de propriété interne. Short sublimé avec élastique à la taille et lacets réglables.

SET SPYDER 3.0



MUNDIAL 100% POLYESTER - 145 g/mq

ADULT S/M/L/XL/XXL/3XL JUNIOR YXS/XXS/XS

LIMITED EDITION

FSOAOL

ADULT

FSOA1L

JUNIOR



07720
black/yellow fluo



02500
black/white



07830
black/orange fluo



OEKO-TEX®
CONFIDENCE IN TEXTILES
STANDARD 100
074744.0 CENTROCOT
Tested for harmful substances.
www.oeko-tex.com/standard100



Set in transfer senza imbottitura. Maglia manica a giro con polsino smacchinato. Collo a giro con parasudore interno elastico. Pantaloni corti in transfer con elastico in vita e laccioli regolabili.

Sublimated set without padding. Shirt with set-in sleeve with knitted cuff. Crew neck with internal elastic neck-tape. Sublimated shorts with elastic waistband and adjustable drawstring.

Ensemble sublimé sans rembourrage. Maillot à manches montées avec bord en tricot plat. Col rond avec bande de propriété interne. Short sublimé avec élastique à la taille et lacets réglables.

SIMON



IMPACT SHORT
PITCH SHORT

MUNDIAL 100% POLYESTER - 145 g/mq

MESH RP14 100% POLYESTER - 60 g/mq

ADULT S/M/L/XL/XXL/3XL | JUNIOR YXS/XXS/XS

FM470L

FM471L

ADULT
JUNIOR



01010
green/black



04920
yellow fluo/black



59120
green fluo/black



04930
orange fluo/black



35710
cyan/black



00120
black



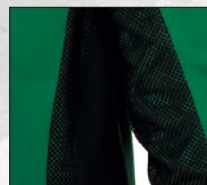
SIMON
SHIRT

SIMON
SHIRT

PITCH
TROUSERS

IMPACT
SHORT

KIT SIMON



Maglia manica a giro con imbottitura e polsino smacchinato. Collo a giro con parasudore interno elastico. Inserto laterale con doppio tessuto Mesh + Mundial.

Shirt with padding and set-in sleeves with knitted cuff. Crew neck with internal elastic neck-tape. Lateral insert with double fabric Mesh + Mundial.

Maillot à manches montées avec rembourrage et bord en tricot plat. Col rond avec bande de propriété interne. Pièce latérale avec tissu bimatière Mesh + Mundial.

CAYMAN



100% NEOPRENE/EVA - 300 g/mq

ADULT S/M/L/XL/XXL/3XL JUNIOR XS

B335

B336

ADULT
JUNIOR



0012
black



Panta corti realizzati in Neoprene con imbottitura sui fianchi in EVA. Elastico in vita. Laccioli regolabili. Raccomandati per l'allenamento, ottimo anche per la gara.

Shorts in neoprene with EVA padding on sides. Elastic waistband. Adjustable drawstring. Recommended for training, also excellent for games.

Short réalisé en néoprène avec rembourrage en EVA sur les hanches. Élastique à la taille. Lacets réglables. Recommandé pour l'entraînement, excellent aussi pour la compétition.

IMPACT



SKIN 100% POLYESTER - 125 g/mq

ADULT S/M/L/XL/XXL JUNIOR YXS/XXS/XS

C335

C336

ADULT
JUNIOR



0012
black



Panta corti con imbottitura sui fianchi. Elastico in vita. Laccioli regolabili. Raccomandati per l'allenamento, ottimo anche per la gara.

Shorts with padding on sides. Elastic waistband. Adjustable drawstring. Recommended for training, also excellent for games.

Short avec rembourrage sur les hanches. Élastique à la taille. Lacets réglables. Recommandé pour l'entraînement, excellent aussi pour la compétition.

STOPPER 3/4 TROUSERS



100% POLYESTER - 260 g/mq

ADULT S/M/L/XL/XXL JUNIOR XS

C345

C346

ADULT
JUNIOR



0012
black



Panta 3/4 con imbottitura sui fianchi e sul ginocchio. Elastico in vita. Laccioli regolabili.

3/4 Trousers with padding on sides and knees. Elastic waistband. Adjustable drawstring.

Pantalon 3/4 avec rembourrage sur hanches et genoux. Élastique à la taille. Lacets réglables.

HYDRON TROUSERS



100% POLYESTER - 172 g/mq

ADULT S/M/L/XL/XXL

EPOAOZ

ADULT



0012
black



Pantaloni con imbottitura sui fianchi e sul ginocchio. Fondo pantalone con costina elasticizzata. Elastico in vita. Laccioli regolabili. Resistenti ad acqua e vento.

Trousers with padding on sides and knees. Hem with elasticated ribbing. Elastic waistband. Adjustable drawstring. Resistant to water and wind.

Pantalon avec rembourrage sur hanches et genoux. Bas du pantalon à fines côtes élastiques. Élastique à la taille. Lacets réglables. Résistant à l'eau et au vent.

CAYMAN LIGHT



90% NYLON 10% ELASTIC - 200 g/mq

ADULT S/M/L/XL/XXL/3XL JUNIOR XS

EP1COZ

EP1C1Z

ADULT
JUNIOR



02600
black/grey



Panta corti con imbottitura sui fianchi in EVA. Cuciture in contrasto. Elastico in vita. Laccioli regolabili. Raccomandati per l'allenamento, ottimo anche per la gara.

Bermuda shorts with padding in EVA on sides. Stitching in contrasting colour. Elastic waistband. Adjustable drawstring. Recommended for training, also excellent for games.

Short avec rembourrage en EVA sur les hanches. Coutures en contraste. Élastique à la taille. Lacets réglables. Recommandé pour l'entraînement, excellent aussi pour la compétition.

PHANTOM 3/4 TROUSERS



90% NYLON 10% ELASTIC - 200 g/mq

ADULT S/M/L/XL/XXL

EP1DOZ

ADULT



02600
black/grey



Panta 3/4 con imbottitura sui fianchi. Cuciture in contrasto. Elastico in vita. Laccioli regolabili.

3/4 trousers with padding on sides. Stitching in contrasting colour. Elastic waistband. Adjustable drawstring.

Pantalon 3/4 avec rembourrage sur les hanches. Coutures en contraste. Élastique à la taille. Lacets réglables.

PITCH TROUSERS



100% POLYESTER - 280 g/mq

ADULT S/M/L/XL/XXL JUNIOR 32/34/36/38/40

C305

C306

ADULT
JUNIOR

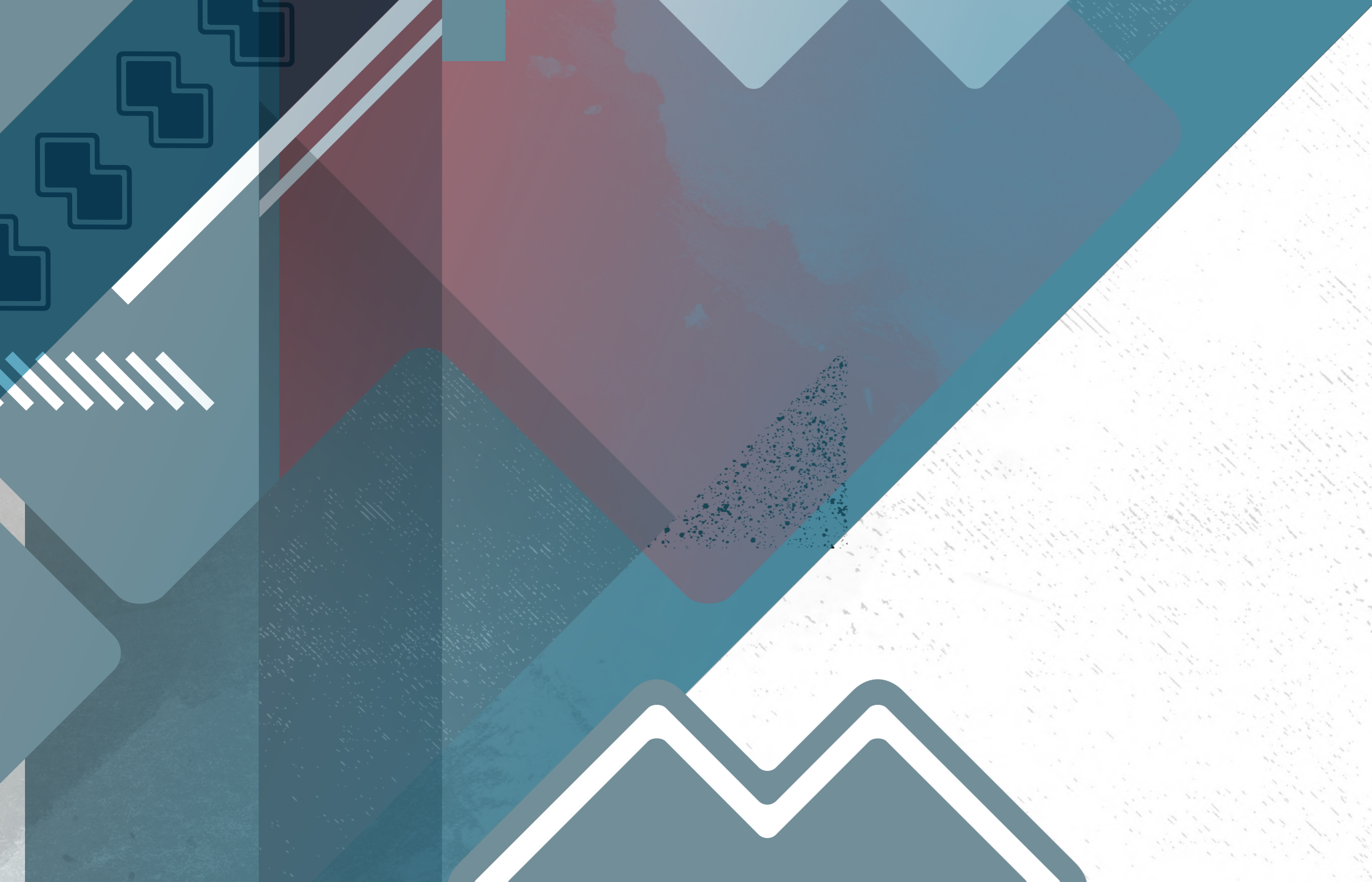


0012
black



Pantaloni con imbottitura sui fianchi. Elastico in vita. Laccioli regolabili.

Trousers with padding on sides. Elastic waistband. Adjustable drawstring. Pantalon avec rembourrage sur les hanches. Élastique à la taille. Lacets réglables.



GLOVES

LEGENDA

GRIP PERFORMANCE:

- 1 STANDARD PERFORMANCE
- 2 GOOD PERFORMANCE
- 3 VERY GOOD PERFORMANCE
- 4 EXCELLENT PERFORMANCE
- 5 OPTIMAL PERFORMANCE

IMPACT ABSORPTION PERFORMANCE:

- 1 STANDARD ABSORPTION IMPACT
- 2 GOOD ABSORPTION IMPACT
- 3 VERY GOOD ABSORPTION IMPACT
- 4 EXCELLENT ABSORPTION IMPACT
- 5 OPTIMAL ABSORPTION IMPACT

FORCEPT FINGERS

ADULT 8/8,5/9/9,5/10/10,5/11 JUNIOR 4/5/6/6,5/7/7,5/8

FAOPOZ

FAOP1Z

JUNIOR ADULT



45570
black/orange fluo/anthracite

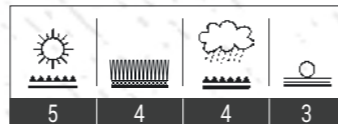


JUNIOR

45570
black/orange fluo/anthracite

Consigliato per la gara.
Recommended for Match.
Conseillé pour la compétition.

GRIP PERFORMANCE



IMPACT
ABSORPTION
PERFORMANCE

- Cuciture tradizionali
- Inserti in mesh
- Lattice hypersoft fluo 4 mm
- Dorso "impact" in lattice 4 mm
- Costruzione tradizionale
- Close fitting bandage
- Sistema di protezione delle dita con stecche removibili (modello adulto)

- Traditional cut
- Mesh inserts
- Hypersoft fluo latex 4 mm
- "Impact" backhand latex 4 mm
- Construction traditionnelle
- Close fitting bandage
- Fingers save system removable (adult only)

- Coutures plates
- Inserts en textile mesh
- Hypersoft fluo latex 4 mm
- Dos "impact" en mousse latex 4 mm
- Construction traditionnelle
- Close fitting bandage
- Systeme de protection des doigts avec barrettes amovible (pour les adultes)

BLACK SPYDER CELEBRATION

ADULT 8/8,5/9/9,5/10/10,5/11 JUNIOR 4/5/6/6,5/7/7,5/8

FAOQOZ

FAOQ1Z

JUNIOR ADULT



07720
black/yellow fluo



GIGA GRIP FLUO



02500
black/white



QUARTZ LATEX



07830
black/orange fluo



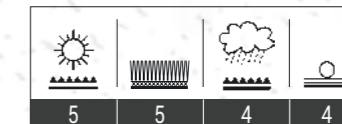
GIGA GRIP FLUO



07830
black/orange fluo

Consigliato per la gara.
Recommended for Match.
Conseillé pour la compétition.

GRIP PERFORMANCE



IMPACT
ABSORPTION
PERFORMANCE

- Cuciture negative
- Inserti in lattice
- Giga grip fluo/quartz latex 4 mm
- Dorso in neoprene + lattice 4mm
- Close fitting bandage
- Punch tech support

- Negative cuts
- Latex inserts
- Giga grip fluo/quartz latex 4 mm
- Backhand in neoprene + latex 4 mm
- Close fitting bandage
- Punch tech support

- Coutures interieures
- Inserts en latex
- Giga grip fluo/quartz latex 4 mm
- Dos en neoprene + mousse latex 4 mm
- Close fitting bandage
- Punch tech support

JUNIOR



07720
black/yellow fluo



02500
black/white

ZERO THE WALL

ADULT 8/8,5/9/9,5/10/10,5/11 | JUNIOR 4/5/6/6,5/7/7,5/8

FAORZ

FAOR1Z

JUNIOR ADULT



25160
green fluo/white/black



NEOPRENE

GIGA GRIP

37110
cyan/black/white



NEOPRENE

GIGA GRIP FLUO

14420
navy/yellow fluo



NEOPRENE

QUARTZ LATEX

02500
black/white



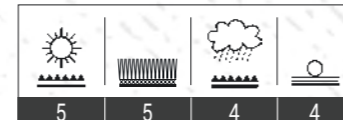
- Cuciture tradizionali
- Inserti in lattice
- Lattice giga grip/giga grip fluo/quartz/superlow 4 mm
- Dorso in neoprene + lattice 4mm
- Close fitting bandage
- Roll finger technology
- Punch tech support

- Traditional cut
- Latex inserts
- Giga grip/giga grip fluo/quartz/superlow latex4 mm
- Backhand in neoprene + latex 4 mm
- Close fitting bandage
- Roll finger technology
- Punch tech support

- Coutures plates
- Inserts en latex
- Giga grip/giga grip fluo/quartz/superlow latex 4 mm
- Dos en neoprene + mousse latex 4 mm
- Close fitting bandage
- Roll finger technology
- Punch tech support

Consigliato per la gara.
Recommended for Match.
Conseillé pour la compétition.

GRIP PERFORMANCE



IMPACT
ABSORPTION
PERFORMANCE

JUNIOR



25160
green fluo/white/black



37110
cyan/black/white



14420
navy/yellow fluo



02500
black/white

COLLISION 2.18

ADULT 8/8,5/9/9,5/10/10,5/11

FAOTOZ

ADULT



45580
black/orange fluo/royal



- Cuciture tradizionali
- Inserti in mesh
- Lattice giga grip fluo/soft latex 4mm
- Dorso in lattice soft 4 mm
- Wrist stabilization system
- Struttura ergonomica
- Traditional cut
- Mesh inserts
- Giga grip fluo/soft latex 4mm
- Backhand soft latex 4 mm
- Ergonomic construction
- Coutures plates
- Inserts en textile mesh
- Giga grip fluo/soft latex 4mm
- Dos en mousse soft 4 mm
- Wrist stabilization system
- Structure ergonomique



45590
black/yellow fluo/green



45600
green fluo/white/royal



04350
red/white/black

Consigliato per la gara e allenamento.
Recommended for Match and training.
Conseillé pour la compétition e l'entraînement.

GRIP PERFORMANCE

4	4	3	3

IMPACT ABSORPTION PERFORMANCE

4

ZERO AQUA THE WALL

ADULT 8/8,5/9/9,5/10/10,5/11

FAOS0Z

ADULT



45640
royal/turquoise/white



Consigliato per la gara.
Recommended for Match.
Conseillé pour la compétition.

GRIP PERFORMANCE

4	4	5	2

IMPACT ABSORPTION PERFORMANCE

3

- Cuciture tradizionali
- Inserti in pu
- Giga grip aqua latex 4 mm
- Dorso in neoprene + lattice 4mm
- Close fitting bandage
- Roll finger technology
- Punch tech support
- Traditional cut
- PU inserts
- Giga grip aqua latex 4 mm
- Backhand in neoprene + latex 4 mm
- Close fitting bandage
- Roll finger technology
- Punch tech support
- Coutures plates
- Inserts en PU
- Giga grip aqua latex 4 mm
- Dos en neoprene + mousse latex 4 mm
- Close fitting bandage
- Roll finger technology
- Punch tech support

MAZE 2.18

ADULT 8/8,5/9/9,5/10/10,5/11

FAOU0Z

ADULT



45810
royal/orange fluo/white



Consigliato per la gara e allenamento.
Recommended for Match and training.
Conseillé pour la compétition e l'entraînement.

GRIP PERFORMANCE

2	2	1	5

IMPACT ABSORPTION PERFORMANCE

3

- Cuciture interne
- Inserti in neoprene
- Lattice superlow 4 mm
- Dorso in lattice sintetico
- Wrist stabilization system
- Linee di pressione ad alta frequenza
- Negative cut
- Neoprene insert
- Lattice superlow 4 mm
- Backhand synthetic latex
- Wrist stabilization system
- High frequency line
- Coutures interieures
- Inserts en neoprene
- Lattice superlow 4 mm
- Dos en mousse synthetique
- Wrist stabilization system
- Rainures a la haute frequence